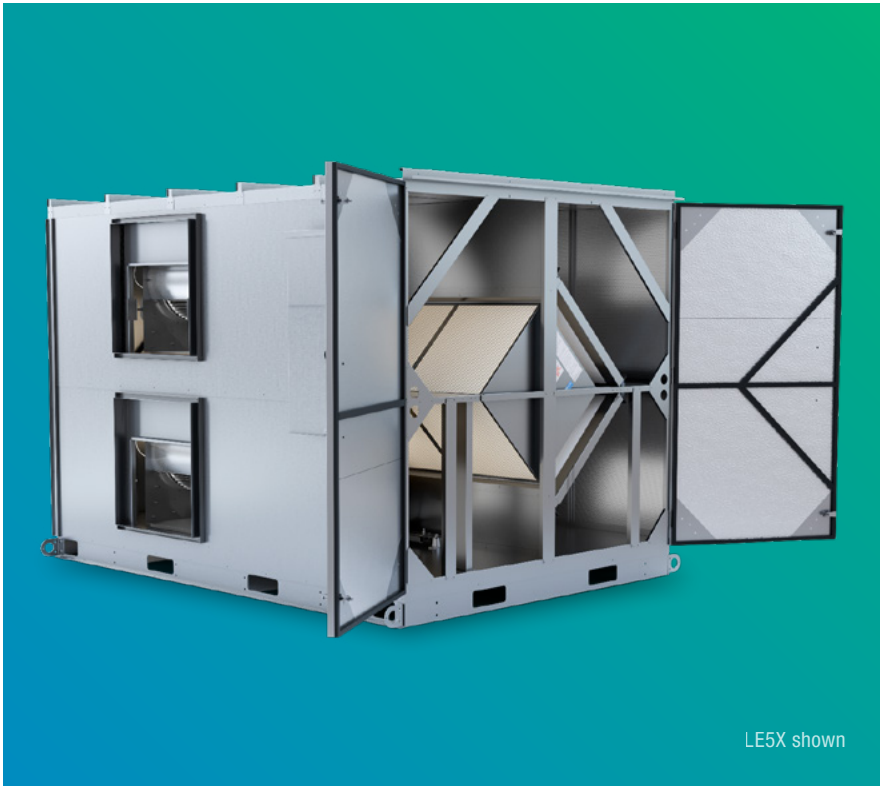


LE SERIES ERVs

COMMERCIAL ENERGY RECOVERY VENTILATORS



LE5X shown

- ◆ Packaged static-plate total energy recovery ventilator
- ◆ 1,250–11,000 CFM
- ◆ Single-point connection, TEFC standard premium efficiency motors
- ◆ Modular design (LE6X–LE10X)
- ◆ Options and accessories: integrated programmable controls, VFDs, double wall, Class 1 low-leakage dampers, MERV 13 filters



 **VENTILATION SOLUTIONS
FOR EVERY APPLICATION**

LE SERIES PACKAGED ENERGY RECOVERY VENTILATORS

DEFICIENT INDOOR AIR QUALITY IS A THREAT

As **buildings get tighter to seal weather out, they seal in contaminants**, causing a reduction in indoor air quality (IAQ). Typical contaminants include off-gassing from carpeting, furniture and building materials, excess humidity and mold, odors, cooking and cleaning fumes, CO2, hair and fibers to name a few.

Deficient IAQ is a threat since it can harm occupant health and cognitive function, damage structures and hurt the bottom line. It's especially concerning since people spend about 90% of their time indoors, and indoor air can be two to five times more polluted than outdoor air. The EPA ranks indoor air pollution as a top-five health risk.¹

ADVERSE EFFECTS OF DEFICIENT IAQ

HEALTH PROBLEMS

Deficient IAQ can cause allergies, headaches, coughs, asthma, skin irritations and breathing difficulties, as well as cancer, liver disease, kidney damage and nervous-system failure.

COGNITIVE IMPAIRMENT

Harvard and Berkeley Lab found that CO2—a constituent of exhaled breath—negatively impacts thinking and decision-making at levels commonly found indoors.²

DISEASE TRANSMISSION

Ventilation with outdoor air is vital to diluting airborne contaminants and decreasing disease transmission rates.

REDUCED PRODUCTIVITY

Berkeley Lab found that poor IAQ can cost \$200 billion in debilitated worker performance and \$58 billion in lost sick time.³



VENTILATION CAN ENHANCE IAQ AND DECREASE THE TRANSMISSION OF AIRBORNE INFECTIOUS DISEASES, INCLUDING COVID-19:
[BIT.LY/LAYERUPWHITEPAPER](https://bit.ly/LAYERUPWHITEPAPER)

¹ "Why Indoor Air Quality is Important to Schools," U.S. Environmental Protection Agency (EPA), <https://bit.ly/2SoyRJc>.

² Romm, "Exclusive: Elevated CO2 Levels Directly Affect Human Cognition, New Harvard Study Shows," Climate Progress, <https://bit.ly/2Vp6AE2>.

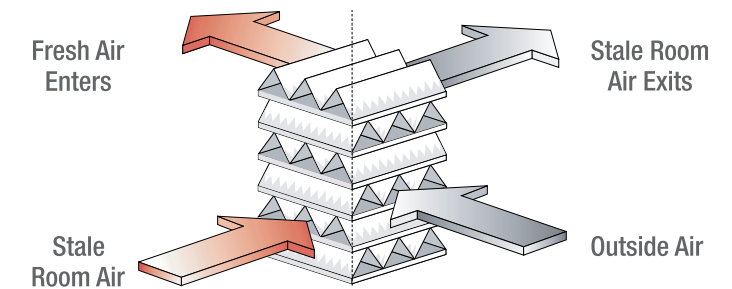
³ Alevantis, Berman, Mills, Perlman, "The Costs and Financial Benefits of Green Buildings," U.S. Green Building Council (USGBC), <https://bit.ly/4f0Fjkz>.

HIGHEST-QUALITY INDOOR AIR VIA VENTILATION

The solution to pollution is dilution achieved via **increased and balanced ventilation**, which is the most effective way to realize cleaner and healthier indoor air. With enough controlled fresh and filtered outdoor air coming in to replace equal parts of stale indoor air via balanced design, IAQ will be enhanced.

This can be done energy-efficiently, cost-effectively, and sustainably with RenewAire's energy recovery ventilation. Our enthalpic core allows the otherwise-wasted sensible and latent energy to transfer between the exhaust and outdoor airstreams which conditions the incoming outdoor air. This is done without the airstreams mixing or needing any condensate drains. The results are improved IAQ and humidity control, greater ventilation efficiency, and substantial energy cost savings.

AIRSTREAMS DO NOT MIX AND POLLUTANTS ARE NOT TRANSFERRED ACROSS PARTITION PLATES



ASHRAE BUILDING CODES AND STANDARDS

With the goal of building sustainably and creating healthy environments for all, the American Society of Heating, Refrigerating and Air-Conditioning Engineers (ASHRAE) has written several standards and guidelines. By enhancing IAQ and saving energy, RenewAire technologies provide the means to meet and exceed all ASHRAE standards and guidelines. Following these parameters leads to greener structures and healthier occupants.

- **ASHRAE Standard 62.1:** "Ventilation for Acceptable Indoor Air Quality" is the recognized standard for designing ventilation systems to achieve acceptable IAQ. ERVs play a key role by creating cleaner and healthier indoor air while optimizing energy efficiency.
- **ASHRAE Standard 90.1:** "Energy Standard for Buildings Except Low-Rise Residential Buildings" is a benchmark for commercial building energy codes in the U.S. and across the world. ERVs are required in several instances based on climate zone and percent of outdoor air at full design airflow rate.



RENEWAIRE VENTILATION SOLUTIONS IMPROVE HEALTH AND WELLNESS

RENEWAIRE CORE TECHNOLOGY

CERTIFICATION

- Commercial Units: Certified by the Air Conditioning, Heating and Refrigeration Institute (AHRI) for an industry-leading, low-to-zero Exhaust Air Transfer Ratio (EATR) at typical static pressure differential
- Residential Units: Certified by the Home Ventilating Institute (HVI) against standard CAN/CSA-C439-18 for an industry leading CFM/W and energy transfer effectiveness
- Superior core flammability performance; passes UL-723 and UL-1812

MAINTENANCE

- RenewAire cores are easy to clean without removing them from the unit, and they never require washing

INNOVATIVE CONSTRUCTION

- Core exchanger material is cellulosic-based and doesn't contain or use halogenated flame retardants or PVCs
- Manufactured with a galvanized steel frame

RELIABILITY

- An industry-leading 10-year structural and performance warranty for the static-plate core, two-year warranty for commercial products

EXCEPTIONAL PERFORMANCE

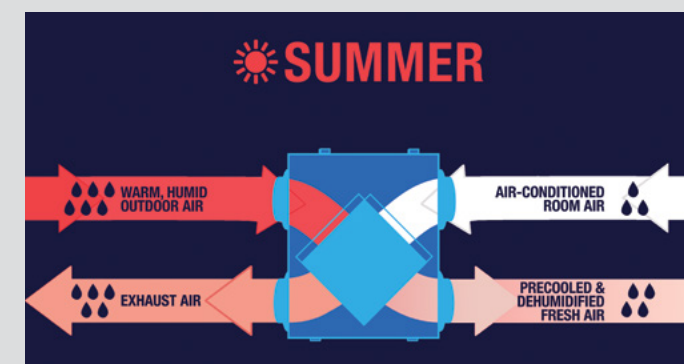
- Moderates heat and humidity via total energy recovery to maintain a comfortable indoor environment
- No need for condensate pans
- Laminar airflow ensures that particulates do not accumulate in the core

REDUCED COSTS

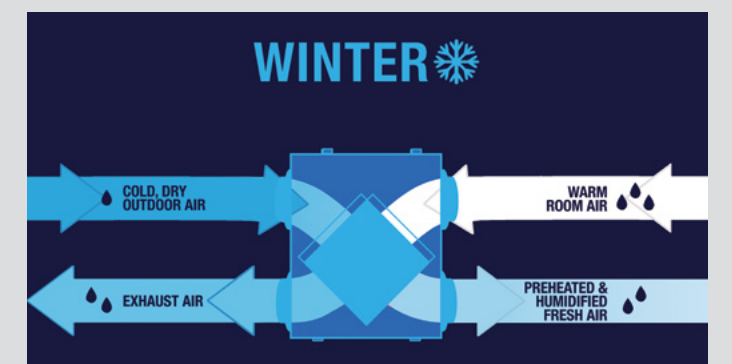
- Optimized energy efficiency via core energy transfer decreases ventilation energy requirements, which can result in smaller air conditioning and heating needs

RENEWAIRE ERVs TEMPER THE AIR

Our ERVs moderate the extremes of outdoor supply-air temperature and humidity year-round, providing a sustainable ventilation solution for every climate.



IN SUMMER, THE WARM, HUMID OUTSIDE AIR IS PRECOOLED AND DEHUMIDIFIED BY THE OUTGOING COOL INTERIOR AIR

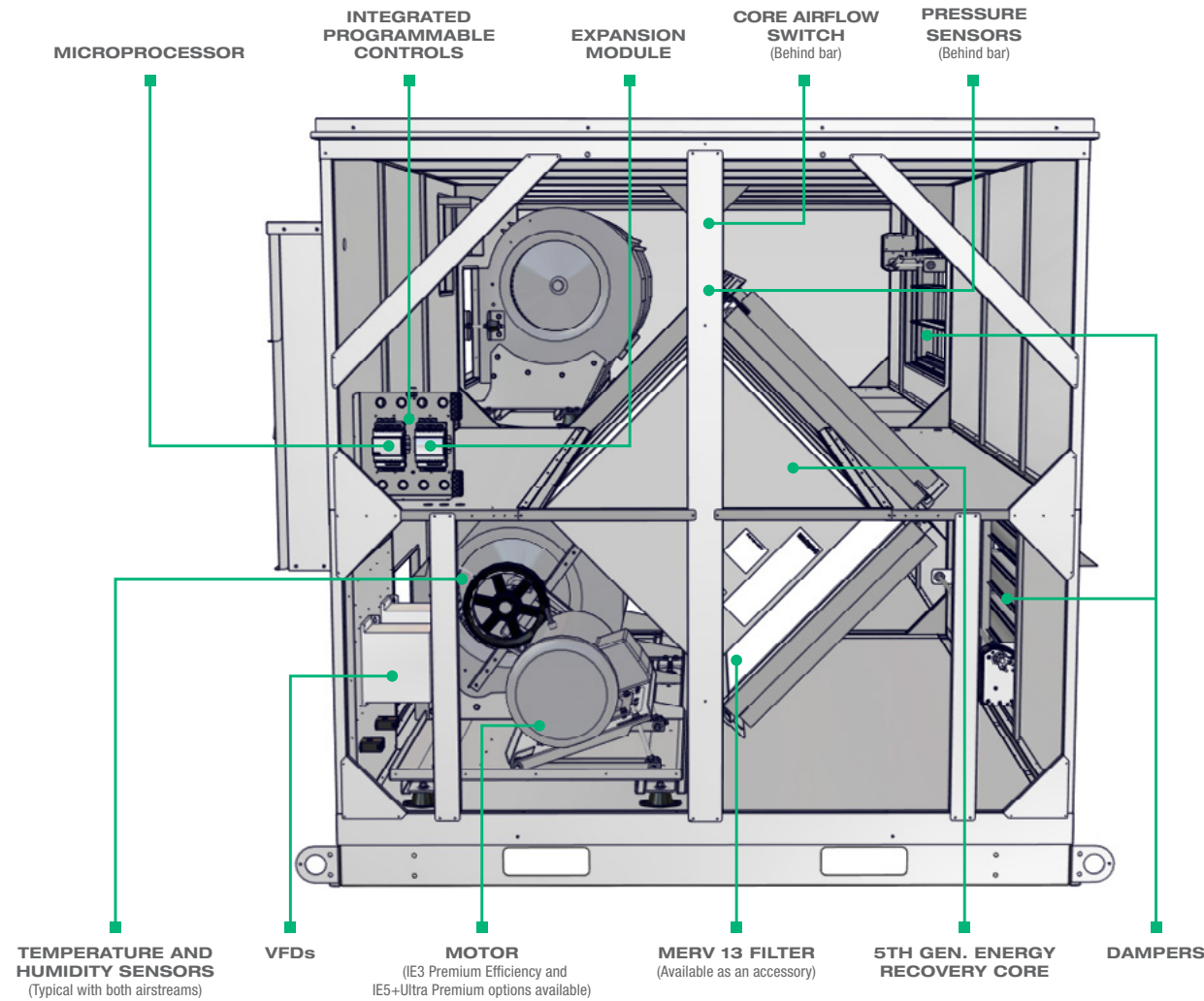


IN WINTER, THE COLD, DRY OUTSIDE AIR IS PREHEATED AND HUMIDIFIED BY THE OUTGOING WARM INTERIOR AIR

A CLOSER LOOK

LE SERIES

As part of our robust commercial ERV line, the innovative LE Series bolsters flexibility, reliability, and efficiency for large-capacity applications. With both indoor and outdoor units available, as well as an extensive airflow range of 1,250–11,000 CFM, the LE Series provides the optimal solution for every commercial job. Utilizing our LE Series ERVs can enhance IAQ, enable downsizing of the HVAC equipment, and reduce costs.



VIEW LIFE SIZE VERSION OF AN LE10XRT ERV



RENEWAIRE VENTILATION SOLUTIONS
INCREASE MONETARY BENEFITS

RenewAire in Action

CASE STUDY: HVAC LOAD REDUCTION AND HEALTHY IAQ AT GRAND CANYON UNIVERSITY



- HVAC loads reduced by 40%
- Annual HVAC costs reduced by 40% every year for the life of the ERVs
- Integrating ERVs facilitated the downsizing of HVAC equipment
- ERVs work within limiting parameters of existing HVAC infrastructure



LEARN MORE ABOUT THIS CASE STUDY: [BIT.LY/48RN6RP](https://bit.ly/48RN6RP)

GREEN BUILDING TRENDS

High-performance, green-building standards seek to reduce energy use and increase ventilation to improve health, wellness, IAQ, and indoor environmental quality (IEQ). Sustainable design initiatives like ASHRAE Standard 189.1, LEED, 2030 Challenge, Living Building Challenge, and WELL Building Standard have grown in popularity among architects, engineers, contractors, and building owners alike. RenewAire ventilation technologies create healthier and more comfortable indoor environments, while optimizing energy efficiency. This is done by reusing otherwise-wasted total energy from the exhaust air to condition incoming outdoor air. The results are exceptional IAQ, IEQ, energy reductions, and cost savings.



RENEWAIRE ERVs ARE THE SUSTAINABLE VENTILATION SOLUTION



RenewAire supports the

PILLARS OF SUSTAINABILITY

PEOPLE

Reduce acute and chronic health problems

Improve alertness and cognitive function

Boost productivity

PLANET

Committed to green manufacturing since 1982

Protect the environment with less energy use

Achieve a green structure with greater energy efficiency

PROFIT

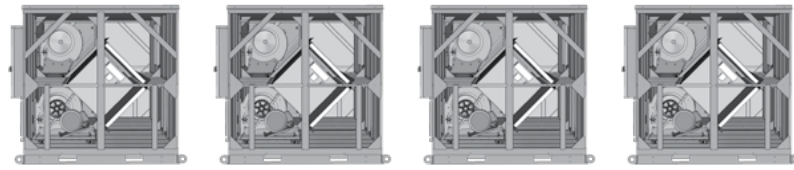
Can benefit from a short payback period

Realize annual energy savings

Trouble-free operations and maintenance



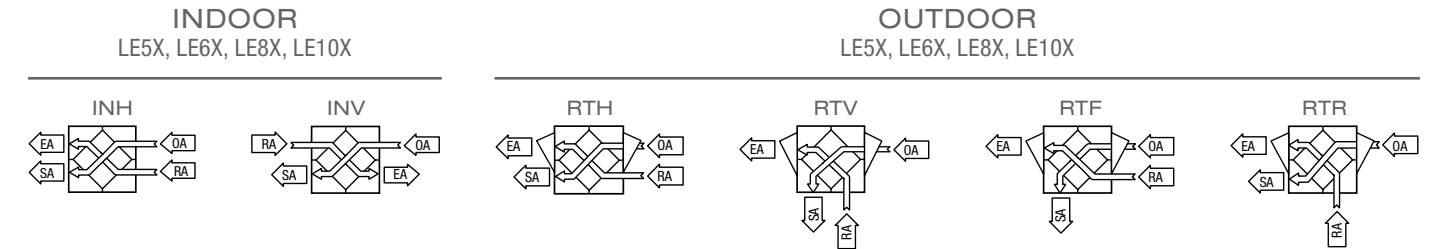
LE MODELS AT A GLANCE



		NEW! LE5X	LE6X	LE8X	LE10X	
UNIT	Airflow Range	1,250–5,500 CFM	1,500–6,600 CFM	2,000–8,800 CFM	2,500–11,000 CFM	
	Indoor or Outdoor Installation Location	✓	✓	✓	✓	
	Two Modules Shipping Option	✗	✓	✓	✓	
	Non-Fused or Fused Unit Disconnect	✓	✓	✓	✓	
	Energy Recovery Static Plate, Heat and Humidity Transfer	✓	✓	✓	✓	
CABINET	Single or Double Wall Construction	✓	✓	✓	✓	
	1" Foil-Faced Insulation	✓	✓	✓	✓	
	2,500-Hour Salt Spray Rated in White or Custom (optional) Painted Cabinets	✓	✓	✓	✓	
	Class 1 Low-Leakage Isolation Dampers - OA, RA or Both Airstreams	✓	✓	✓	✓	
SUPPLY/EXHAUST FAN	Belt-Driven Forward Curved Centrifugal Supply/Exhaust Blower	✓	✓	✓	✓	
	Supply/Exhaust Fan Speed Controls with Sheave and Motor Starters or VFD	✓	✓	✓	✓	
	Fan Vibration Isolation	Rubber-in-Shear or Spring Isolators (optional)				
	Motor Voltage at 60 Hz	120V 1P	✓	✗	✗	✗
		208-230V 1P	✓	✓	✓	✓
		208-230V 3P	✓	✓	✓	✓
		460V 3P	✓	✓	✓	✓
		575V 3P	✓	✓	✓	✓
	Unit ESP	0–2 in. w.g.	0–2 in. w.g.	0–2 in. w.g.	0–2 in. w.g.	
	CONTROLS	Integrated Programmable Controls - Enhanced, Premium (optional)	✓	✓	✓	✓
Optional Communications		BACnet, Modbus RTU or TCP				
ACCESSORIES	Roof Curbs	✓	✓	✓	✓	
	MERV 8 Filters (2" standard, 4" optional)	✓	✓	✓	✓	
	MERV 13 Filters (2" or 4" optional)	✓	✓	✓	✓	
CERT.	Certifications					

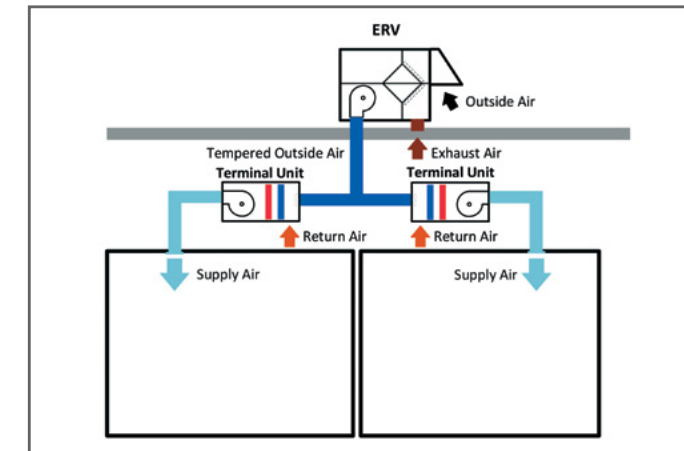
Note: The IE5+ motor is only available for 208–230V and 460V 3P.

AIRFLOW ORIENTATIONS



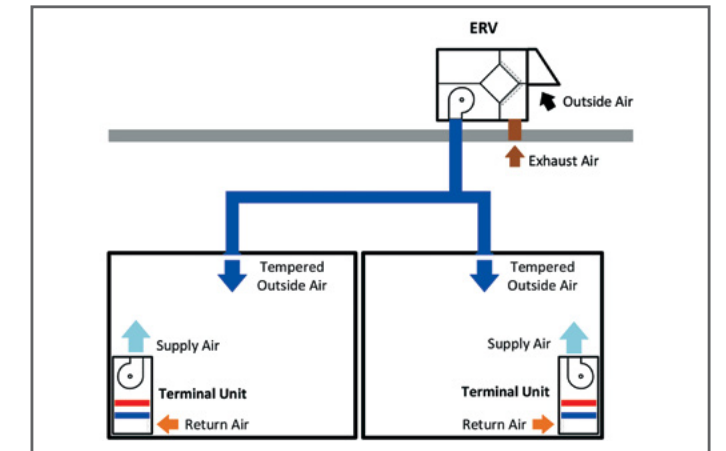
APPLICATION STRATEGIES

AIR SUPPLIED TO INTAKES OF TERMINAL UNITS



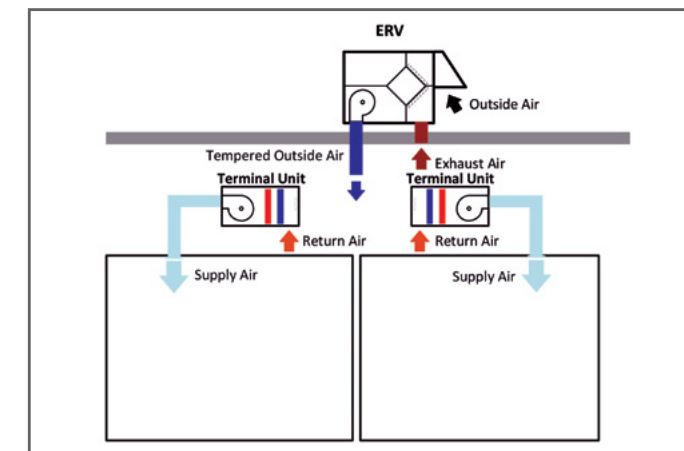
- Variable refrigerant flow/volume
- Fan coils
- Active chilled beam

DIRECT-TO-ZONE WITH TERMINAL UNITS



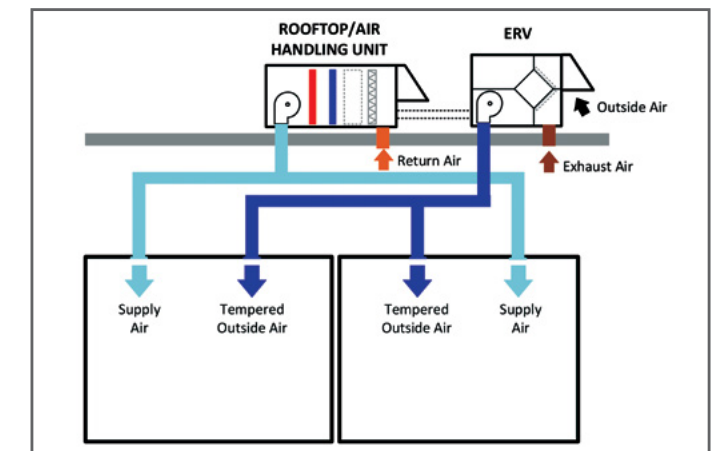
- Variable refrigerant flow/volume
- Fan coils
- Heat pumps
- Chilled beam
- Radiant floor heating and cooling
- Packaged terminal air conditioning

SUPPLY AIR TO MIXING BOXES FOR INDOOR TERMINAL UNITS OR ROOFTOPS



- Variable refrigerant flow/volume
- Fan coils
- Chilled beam

DIRECT-TO-ZONE WITH ROOFTOP OR TO MIXING BOX OF ROOFTOP UNITS (See dotted line)



ACCESSORIES

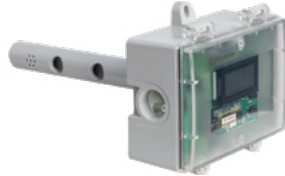
CONTROLS



CO2 Sensor Wall/Duct Mount



IAQ Sensor Wall/Duct Mount



CO2 Sensor Duct Mount



IAQ Sensor Duct Mount



Temperature Sensor
Duct Mount



BACnet
Fan Control



Occupancy Sensor
Ceiling Mount



Occupancy Sensor
Wall/Ceiling Mount



Filter 0-2" W.C.
Pressure Sensor



Duct Static Pressure Sensor
Wall/Duct Mount with Display



Smoke Detector
Duct Mount



Remote Display
Handheld or Wall Mount

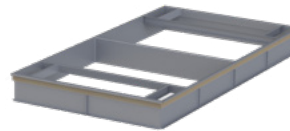
CURBS



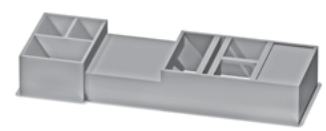
Digital Time Clock
Wall Mount



Digital Time Clock
Exterior Enclosure



Standard Roof Curb

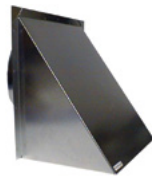


Engineered Combo Curb
(for select AHU/RTU)

WALL VENTS AND DAMPERS



Louvered Wall Vent, 10" Round
Duct Connection, 12" x 12"



Hooded Wall Vent 10" and 12"
Galvanized, Paintable Galvanneal



Backdraft Damper
10" and 12"



Automatic Balancing Damper
4", 5", and 6"

HEATERS



RH Series Electric Duct Heater
(for indoor units only)



EK Series Electric Duct Heater
(for indoor units only)



GH Series Indirect Gas-Fired
Duct Furnace (indoor or rooftop)



2" or 4" MERV 8, and 13

FILTERS