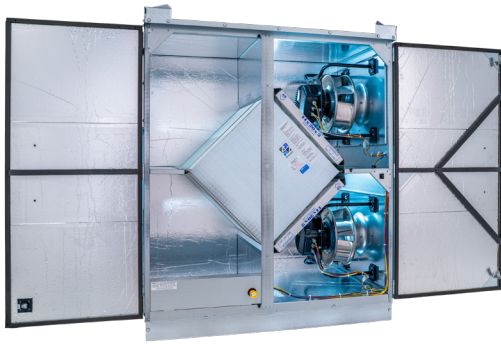


NEW! ROOFTOP UNIT



Energy recovery core is AHRI Certified®



SPECIFICATIONS

Ventilation Type: Static plate, heat and humidity transfer

Airflow Range: 369–1,621 CFM

AHRI 1060 Certified Core: One L62-G5 and one L125-G5

Standard Features:

- Non-fused disconnect
- 24VAC transformer/relay package
- Cross-core differential pressure ports
- Independent blower control

Filters:

Total qty. 4, MERV 8: (2) 14" x 20" x 2" and (2) 16" x 20" x 2"

Unit Weight: 391–615 lbs., varies by option(s)

Max. Shipping Dimensions & Weight (on pallet):

70" L x 47" W x 90 3/4" H
72" L x 72" W x 90 3/4" H (bypass economizer)
766 lbs.

Motor(s): Qty. 2, 480 W ea., Direct drive EC motorized impeller packages (120V/1Ph/60HZ)

Options:

Qty. 2, Direct drive EC motorized impeller packages
770W 208-230V/1Ph/60HZ (Advanced),
2150W 208-230V/3Ph/60HZ (Advanced),
2100W 460V/3Ph/60HZ (Advanced)

Fused disconnect

Integrated programmable controls: enhanced, premium

Bypass economizer (see DIM drawing):

- dry-bulb temperature controls (standard),
- enthalpy controls (option)

Class 1 low leakage motorized isolation dampers:

SA, EA or both airstreams

Factory mounted filter alarms: both airstreams

Double wall construction

Exterior paint: white, custom colors

Accessories:

Filters: MERV 13, 2" (shipped loose)

Automatic balancing damper: 4", 5", 6"

Potentiometer speed control: remote installed

Roof curb: standard 14"

Curb wind clip

Engineered combo curb for Carrier RTU

Engineered combo curb for Trane RTU

Digital time clock: wall mount (TC7D-W),
in exterior enclosure (TC7D-E)

Carbon dioxide sensor/control:

wall mount (CO2-W), duct mount (CO2-D)

IAQ sensor: wall mount (IAQ-W), duct mount (IAQ-D)

Motion occupancy sensor/control:

ceiling mount (MC-C), wall mount (MC-W)

Smoke detector: duct mount (SD-D)

BACnet fan control: wall mount (BACNETFC-W)

Indoor electric duct heater: EK series (1–175 kW);

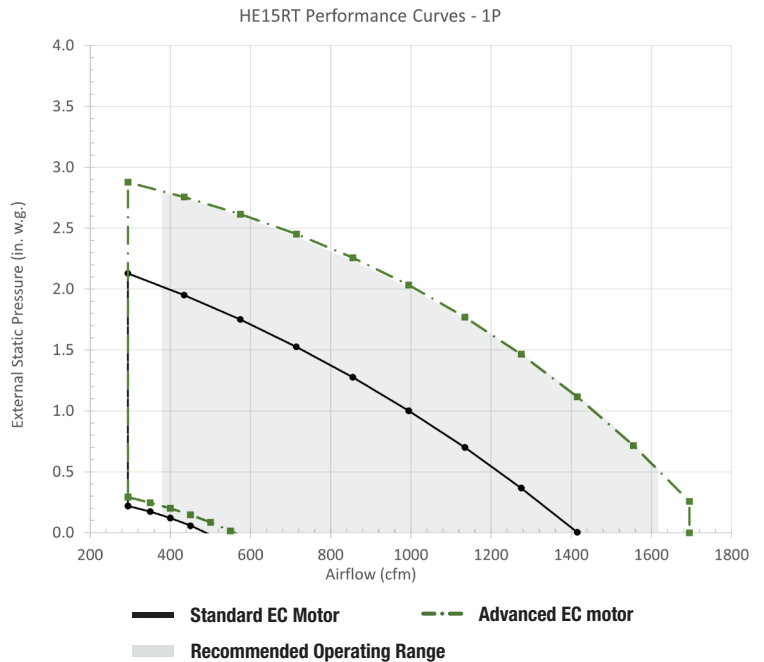
Indirect gas-fired duct furnace: GH series (50–400 MBH);
installed downstream of any fans

Duct flange kit: square 16" x 16", 2 flanges

1-PHASE EC MOTOR OPERATING RANGE AND FAN PERFORMANCE

HE15RT MOTOR 1P/120V Option		
Airflow (CFM)	Standard EC	
	External Static Pressure (Inches Water Column)	Unit Power Consumption (Watts)
295	2.13	640
435	1.95	703
575	1.75	767
715	1.53	827
855	1.28	881
995	1.00	924
1135	0.70	953
1275	0.37	965
1415	0.00	955

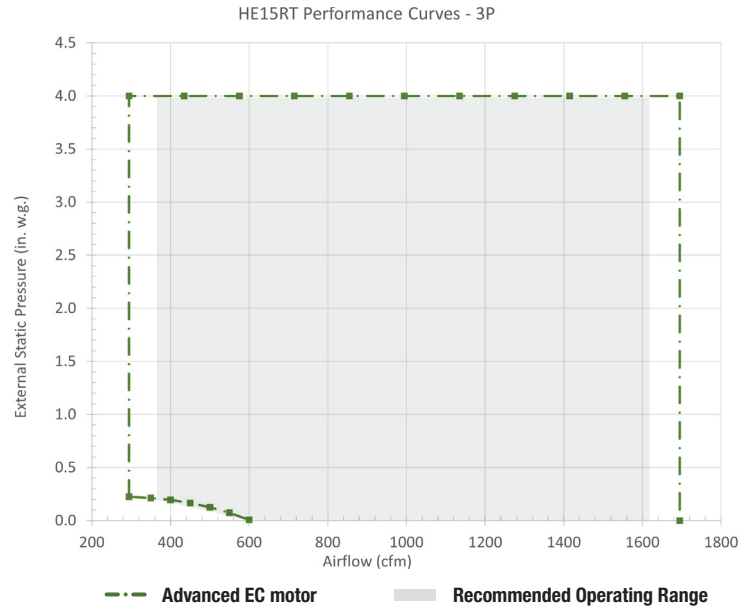
HE15RT MOTOR 1P/208-230V Option		
Airflow (CFM)	Advanced EC	
	External Static Pressure (Inches Water Column)	Unit Power Consumption (Watts)
295	2.88	896
435	2.76	988
575	2.62	1079
715	2.45	1166
855	2.26	1245
995	2.03	1313
1135	1.77	1368
1275	1.47	1407
1415	1.12	1427
1555	0.71	1424
1695	0.26	1397
1695	0.00	1243



3-PHASE EC MOTOR OPERATING RANGE AND FAN PERFORMANCE

HE15RT MOTOR 3P/208-230V Option		
Airflow (CFM)	Advanced EC	
	External Static Pressure (Inches Water Column)	Unit Power Consumption (Watts)
295	4.00	1645
435	4.00	1773
575	4.00	1933
715	4.00	2122
855	4.00	2341
995	4.00	2588
1135	4.00	2866
1275	4.00	3174
1415	4.00	3510
1555	4.00	3867
1695	4.00	4234

HE15RT MOTOR 3P/460V Option		
Airflow (CFM)	Advanced EC	
	External Static Pressure (Inches Water Column)	Unit Power Consumption (Watts)
295	4.00	1567
435	4.00	1689
575	4.00	1841
715	4.00	2021
855	4.00	2229
995	4.00	2465
1135	4.00	2729
1275	4.00	3022
1415	4.00	3343
1555	4.00	3683
1695	4.00	4032

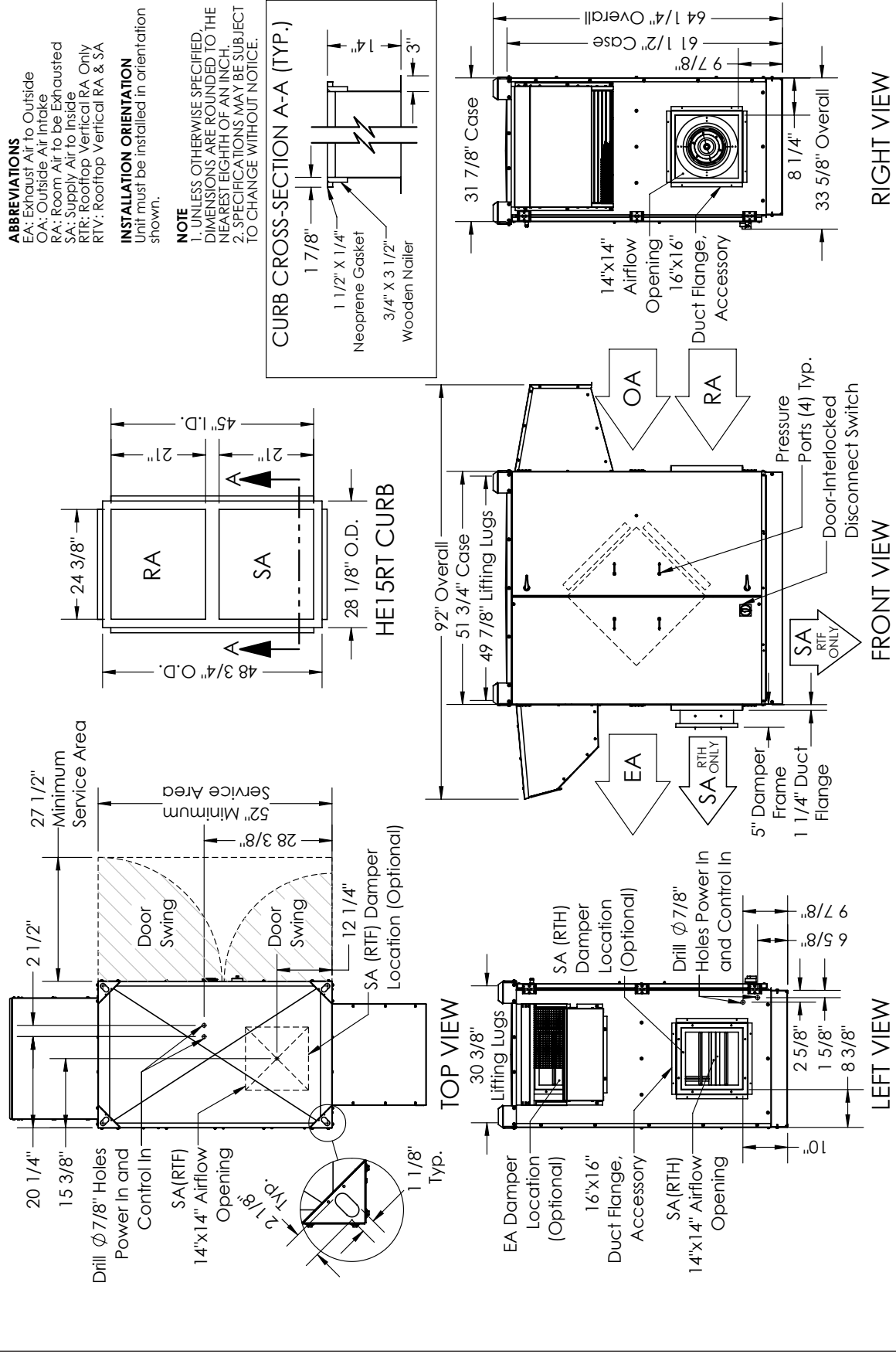


Note: Watts is for the entire unit. Airflow performance include effect of clean, standard filter supplied with unit.

ELECTRICAL DATA

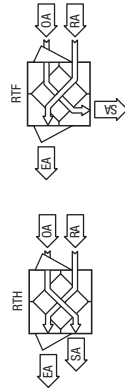
Option	Watts	Volts	Hz	Phase	FLA per motor	Min. Cir. Amps	Max. Overcurrent Protection Device
[EE] Standard	480	120	60	Single	6.7	15.1	20
[AA] Advanced	770	208-230	60	Single	3.4	7.7	15
	2150	208-230	60	Three	5.7	12.8	15
	2100	460	60	Three	2.9	6.5	15

HE15RTH/RTF ENERGY RECOVERY VENTILATOR



AIRFLOW CONFIGURATION

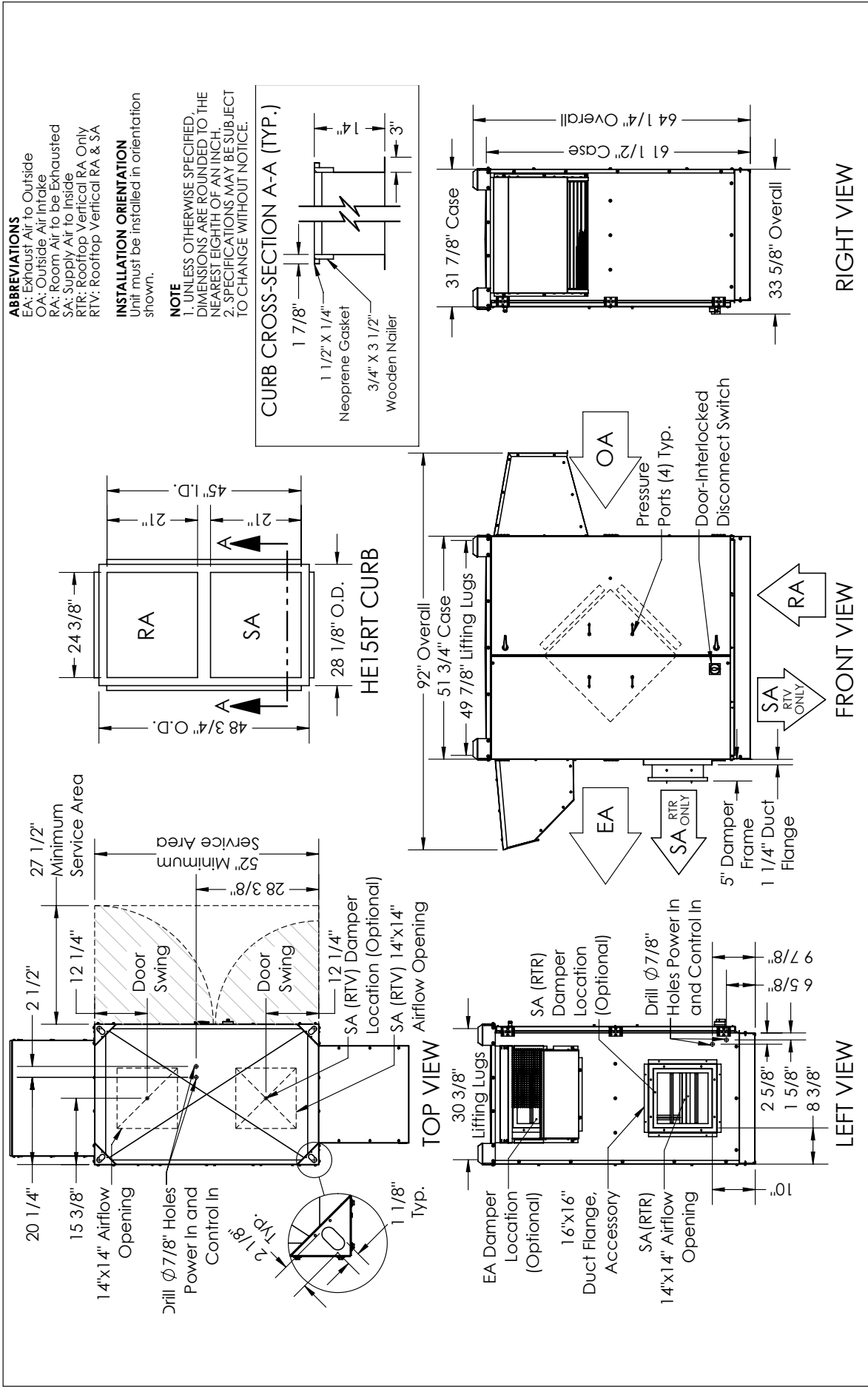
Available as shown in dimension drawing.



UNIT MOUNTING & APPLICATION

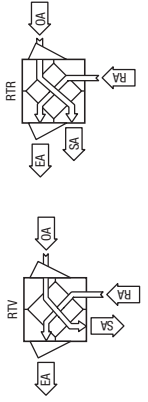
Must be mounted as shown. Airstreams cannot be switched. Duct configuration is not field convertible.

HE15RTR/RTR ENERGY RECOVERY VENTILATOR



AIRFLOW CONFIGURATION

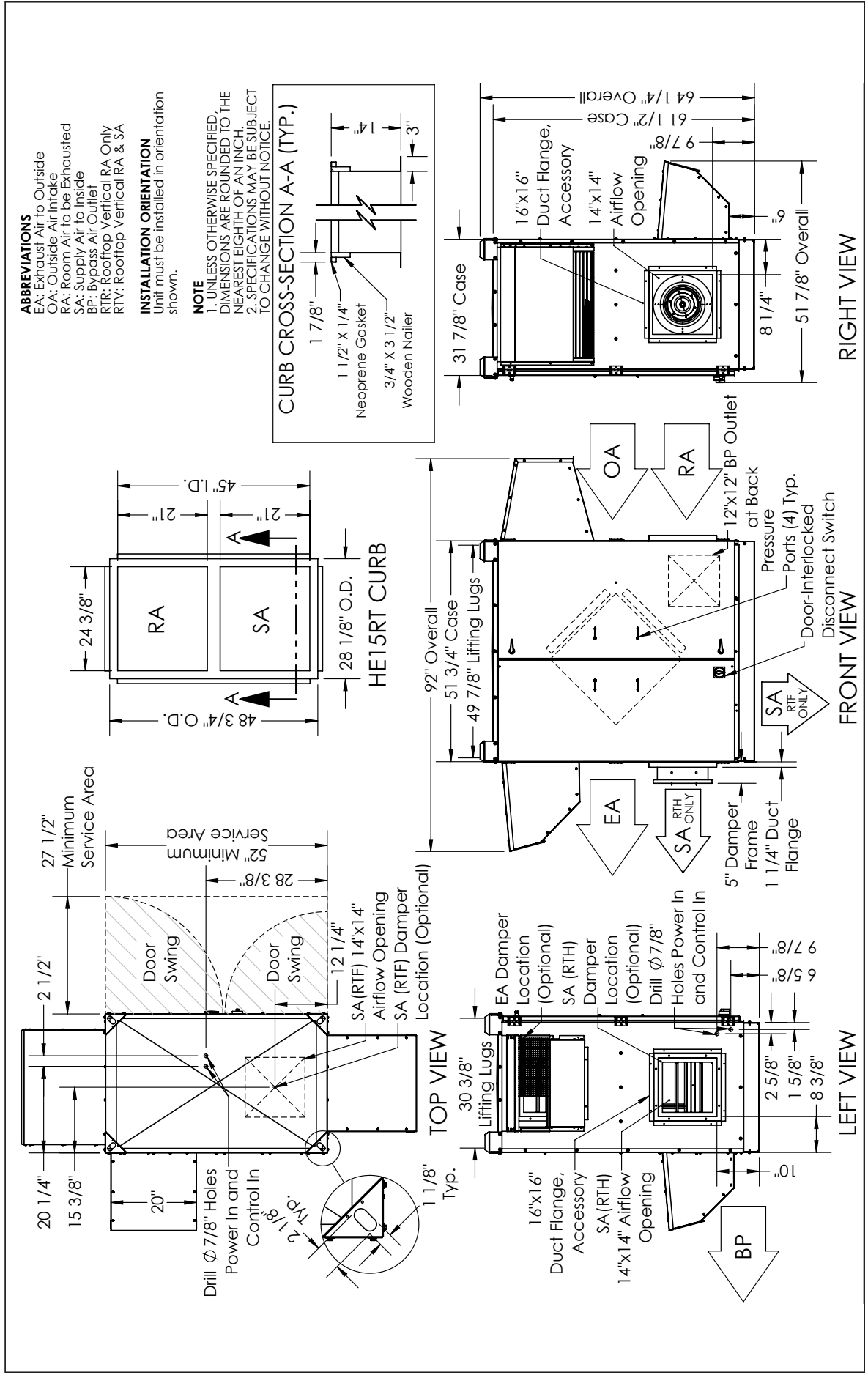
Available as shown in dimension drawing.



UNIT MOUNTING & APPLICATION

Must be mounted as shown. Airstreams cannot be switched. Duct configuration is not field convertible.

HE15RTH/RTF ENERGY RECOVERY VENTILATOR WITH BYPASS ECONOMIZER



HE15RTV/RTR ENERGY RECOVERY VENTILATOR WITH BYPASS ECONOMIZER

