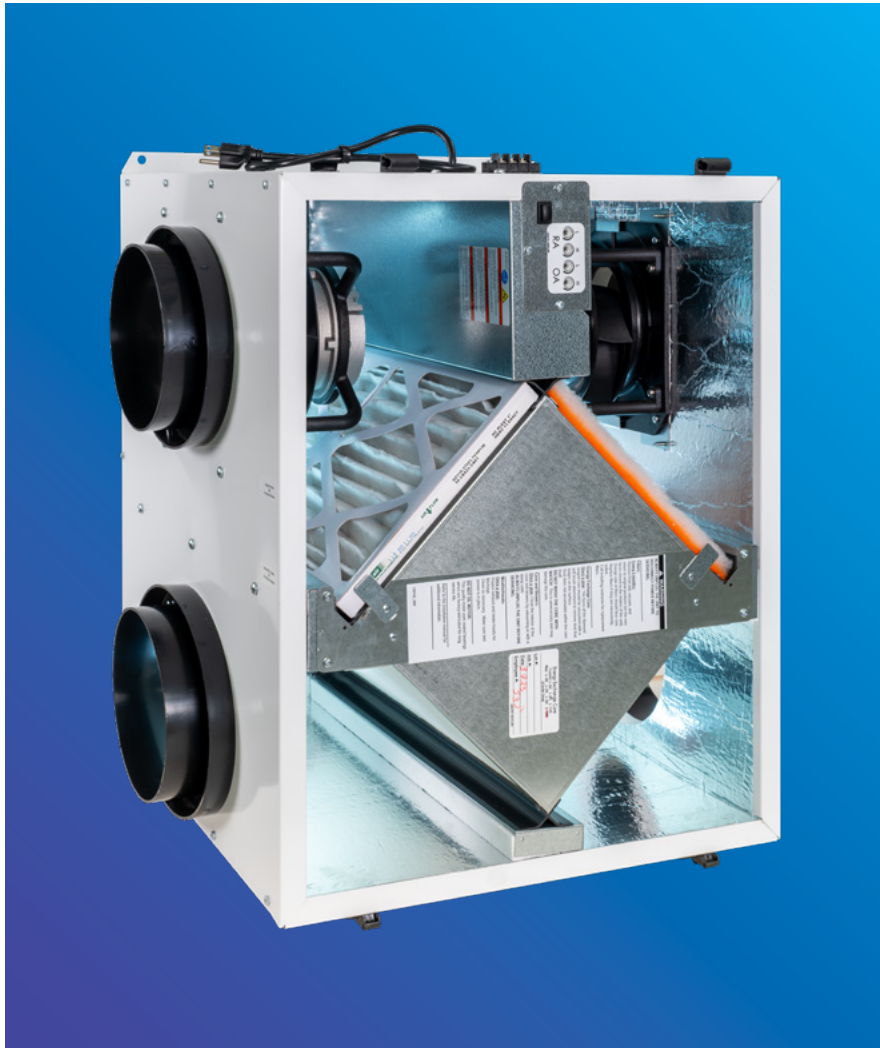


AWARD WINNING

EV PREMIUM ERVs

SINGLE/MULTI-FAMILY, LIGHT COMMERCIAL APPLICATIONS



- ◆ 30–390 CFM
- ◆ Residential ERVs certified for commercial-grade applications
- ◆ EC motorized Impellers, variable speed with boost-mode, plug-in and hard wired power available
- ◆ MERV 13 filter accessory
- ◆ EV Premium+ S/SH, M/MH comply with 2025 California Energy Commission's (CEC) Title 24, Part 6 ERV FID requirement
- ◆ EV Premium SH, MH, LH awarded TechHome Builder's 2023 Brilliance Award



 **VENTILATION SOLUTIONS
FOR EVERY APPLICATION**

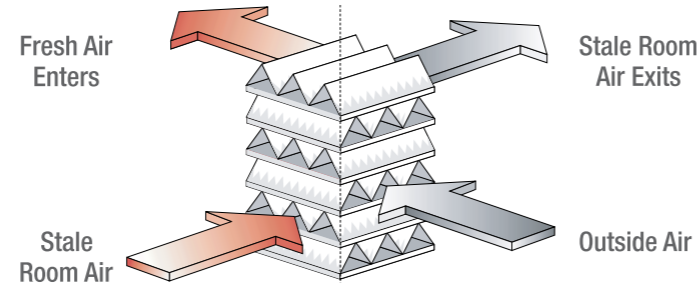
EV PREMIUM+, EV PREMIUM ERVs: SINGLE/MULTI-FAMILY, LIGHT COMMERCIAL ERV

BALANCED VENTILATION & HIGHEST-QUALITY INDOOR AIR

As new buildings get tighter to seal weather out, they seal in contaminants, causing deficient indoor air quality (IAQ). Since people spend, on average, 90% of their time indoors¹, and indoor air can be two to five times more polluted than outdoor air², indoor air quality has very real impacts on health and cognitive function.

Our EV Premium ERVs can improve indoor air quality by removing contaminants, such as off-gassing from carpeting, furniture and building materials, excess humidity and mold. Our technology takes stale indoor air and replaces it with fresh, conditioned and filtered outdoor air.

AIRSTREAMS DO NOT MIX AND POLLUTANTS ARE NOT TRANSFERRED ACROSS PARTITION PLATES



BETTER HEALTH + LOWER BILLS = INCREASED VENTILATION VIA ERVs

The American Society of Heating, Refrigeration and Air Conditioning Engineers (ASHRAE) 62.2 committee has established a residential ventilation standard, known as *Ventilation and Acceptable Indoor Air Quality in Residential Buildings*. The goal of this standard and its continuous revisions are to not only evaluate and recommend every building's minimum ventilation needs, but also emphasize indoor air quality and its relationship with occupant health. ERVs reduce energy costs while meeting the standard.

See the chart below to calculate minimum ventilation required for your home: $.03 \times \text{sq. ft.} + 7.5(\text{bedroom} + 1)$. For example, a 2,200 sq. ft. home with 4 bedrooms requires a minimum of 104 CFM.

MINIMUM VENTILATION AIRFLOW REQUIRED BY HOME SIZE

SQUARE FEET	<500'	501'-1000'	1001'-1500'	1501'-2000'	2001'-2500'	2501'-3000'	3001'-3500'	3501'-4000'
1 BEDROOM	30	45	60	75	90	105	120	135
2 BEDROOMS	38	53	68	83	98	113	128	143
3 BEDROOMS	45	60	75	90	105	120	135	150
4 BEDROOMS	53	68	83	98	113	128	143	158
5 BEDROOMS	60	75	90	105	120	135	150	165

* Infiltration credit not considered, please contact RenewAire to assist in selecting a unit that is best suited for your home.

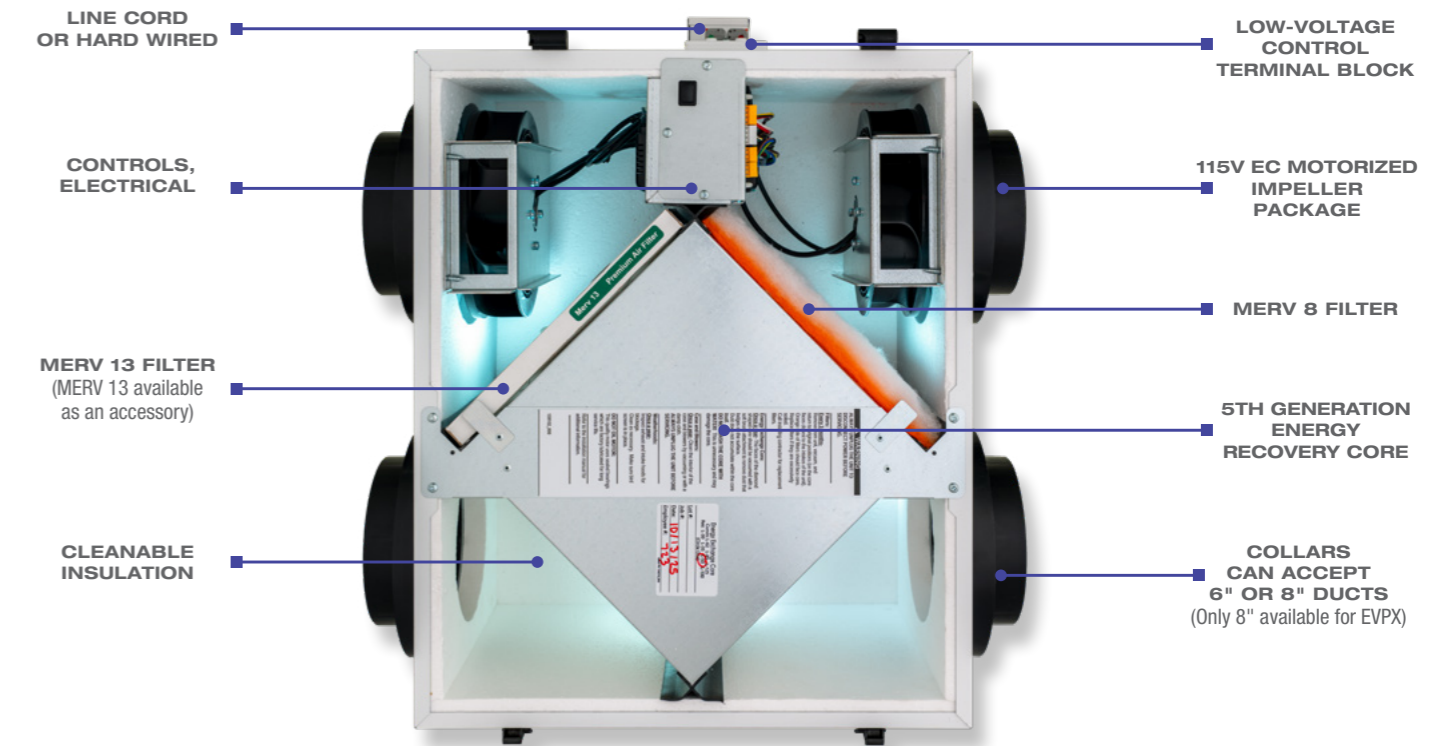
NEW! EV PREMIUM+ SERIES

As an extension of the popular and award-winning residential EV Premium Series, we've added EV Premium+ (S, SH, M, and MH). These ERVs are compliant with 2025 California Energy Commission's (CEC) Title 24, Part 6 ERV Fault Indicator Display (FID) requirements and have all of the classic features of the EV Premium line (EC motorized impellers, MERV 13 capability), but also feature a unique, new Touchscreen Control+ (TC1+) accessory. The user-friendly, wall mounted TC1+ allows for easy setup and additional on-demand ventilation options.

Please note that existing EV Premium models cannot be retrofitted to become EV Premium+ ERVs.

EV PREMIUM SERIES

Ideal for single- and multi-family structures, as well as light-commercial buildings, these EV Premium Series ERVs incorporate high-efficiency EC motorized impellers to meet strict energy codes. The EV Premium Series ERVs also include a Dial-A-Flow controller that allows users to set airflow for maximizing comfort. In addition, these ERVs have boost-mode capabilities with MERV 13 filters as an accessory to further enhance IAQ.



RENEWAIRE CORE TECHNOLOGY

CERTIFICATION

- Commercial Units: Certified by the Air Conditioning, Heating and Refrigeration Institute (AHRI) for an industry-leading, low-to-zero Exhaust Air Transfer Ratio (EATR) at typical static pressure differential
- Residential Units: Certified by the Home Ventilating Institute (HVI) against standard CAN/CSA-C439-18 for an industry leading CFM/watt and energy transfer effectiveness
- Superior core flammability performance; passes UL-723 and UL-1812

MAINTENANCE

- RenewAire cores are easy to clean without removing them from the unit, and they never require washing

INNOVATIVE CONSTRUCTION

- Core exchanger material is cellulosic-based and doesn't contain or use halogenated flame retardants or PVCs
- Manufactured with a galvanized steel frame

RELIABILITY

- An industry-leading 10-year structural and performance warranty for the static-plate core, two-year warranty for commercial products and five-year warranty for residential products

EXCEPTIONAL PERFORMANCE

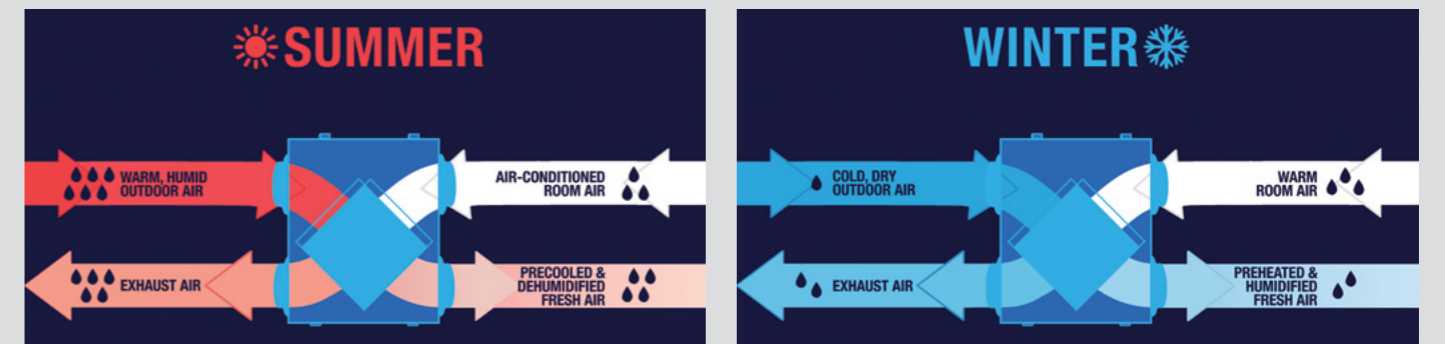
- Moderates heat and humidity via total energy recovery to maintain a comfortable indoor environment
- No need for frost protection or condensate pans
- Laminar airflow ensures that particulates do not accumulate in the core

REDUCED COSTS

- Optimized energy efficiency via core energy transfer decreases ventilation energy requirements, which can result in smaller air conditioning and heating needs

RENEWAIRE ERVs TEMPER THE AIR

Our ERVs moderate the extremes of outdoor supply-air temperature and humidity year-round, providing a sustainable ventilation solution for every climate.



IN SUMMER, THE WARM, HUMID OUTSIDE AIR IS PRECOOLED AND DEHUMIDIFIED BY THE OUTGOING COOL INTERIOR AIR

IN WINTER, THE COLD, DRY OUTSIDE AIR IS PREHEATED AND HUMIDIFIED BY THE OUTGOING WARM INTERIOR AIR

¹ "Indoor Air Pollution: Introduction for Health Professionals," U.S. Consumer Product Safety Commission, <https://bit.ly/2Yk0czT>.

² "Why Indoor Air Quality is Important to Schools," U.S. Environmental Protection Agency (EPA), <https://bit.ly/2SoyRjC>.





EV PREMIUM+ S/SH, EV PREMIUM S/SH

EV PREMIUM+ M/MH, EV PREMIUM M/MH

EV PREMIUM L

EV PREMIUM X

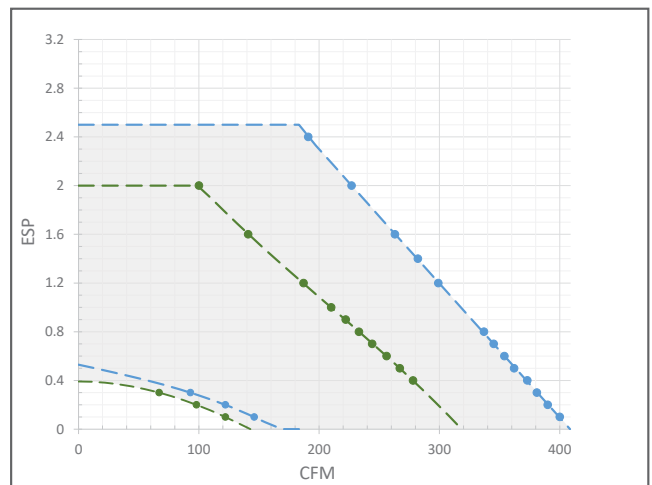
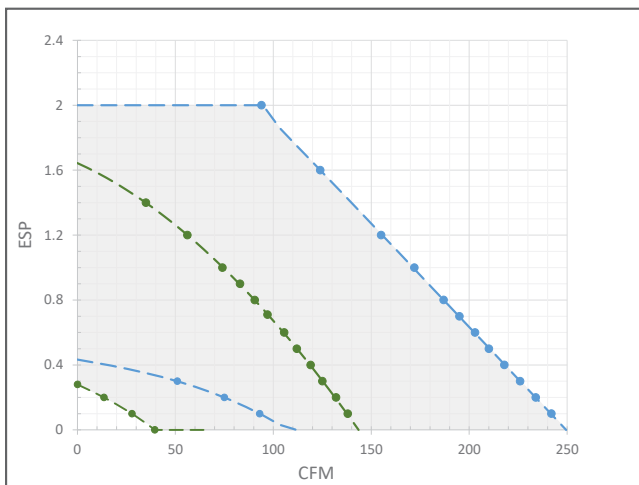
Power Supply	Line cord or hard wired			
Airflow Range	30–130 CFM	30–230 CFM	30–280 CFM	100–390 CFM
Fans	EC Motorized Impellers			
Speeds*	Two Independent Variable Speeds: Low & High/Boost-mode			
Airflow Setpoints	EV Premium+: Constant Volume or Speed EV Premium: Constant Speed		Constant Speed	
Terminal Connections	EV Premium+: High & Low Speed Activate, Furnace/AC Interconnect, Motorized Dampers (2) EV Premium: High Speed Activate, Furnace/AC Interconnect**, Motorized Damper (1)		High Speed Activate, Furnace/AC Interconnect**, Motorized Damper (1)	
Fault	EV Premium+: Monitoring & Indication EV Premium: None		None	
Length	22 1/2"	22 1/2"	22 1/2"	24 3/8"
Width	9 5/8"	12 5/8"	23 5/8"	23 5/8"
Height	23 3/4"	23 3/4"	23 3/4"	27 1/4"
Weight	32 lbs.	36 lbs.	52 lbs.	65 lbs.
Mount	Ceiling Bracket/Wall Bracket			
Filter	MERV 8, MERV 13 (supply outside air only for MERV 13)			
Warranty	Core: 10-year, Unit: 5-year			
Fan Efficiency	1.82 CFM/watt at 51 CFM (0.2" ESP)	2.55 CFM/watt at 102 CFM (0.2" ESP)	2.7 CFM/watt at 121 CFM (0.2" ESP)	2.44 CFM/watt at 197 CFM (0.2" ESP)
Example Ratings**	74% SRE at 51 CFM	81% SRE at 51 CFM	88% SRE at 59 CFM	78% SRE at 102 CFM
Certifications	 			

*Boost-mode: Maximum airflow achievable in boost-mode when continuous airflow set point is below max rating.

**Accessory required.

**For all rating points, please refer to the HVI website certified products directory. HVI rating point 32°F.

EV PREMIUM+ S/M, EV PREMIUM S/M EV PREMIUM L/X



--- indicates EV Premium S

--- indicates EV Premium M

--- indicates EV Premium L

--- indicates EV Premium X

ACCESSORIES

FILTERS



MERV 13 Filters OA Airstream

MOUNTS

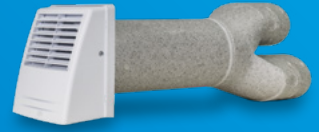


Wall-Bracket Kit

LOUVERS & WALL VENTS



6", 8" White or Brown



Concentric Vent

CONTROLS



Low Voltage Countdown Timer (LVCT)



Low Voltage Percentage Timer (LVPT)



Percentage Timer with Furnace Interlock (FM)



CO2 Sensor Duct Mount



IAQ Sensor Duct Mount



CO2 Sensor Wall Mount



IAQ Sensor Wall Mount



Occupancy Sensor Wall Mount



Occupancy Sensor Ceiling Mount



Digital Time Clock Wall Mount



Digital Time Clock Exterior Enclosure



Touchscreen Control+ (TC1+)

DAMPERS



Automatic Balancing Valve
4", 5", 6"

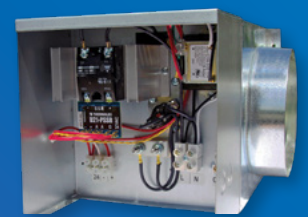


Backdraft Damper
6", 8"



Motorized Damper
6", 8"

HEATERS

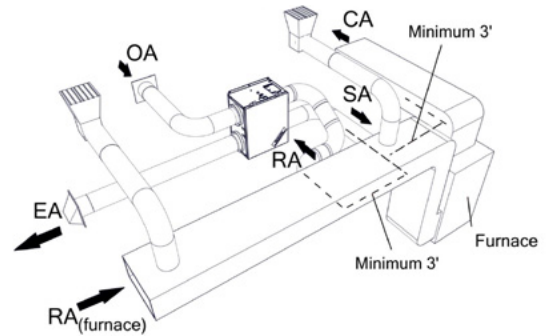


RH Series Electric Duct Heater
1 to 11.5kW

INSTALLATION & MAINTENANCE

INSTALLATION

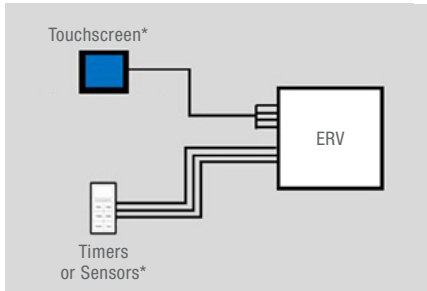
Installation of both the EV Premium+ and EV Premium Series ERVs is simple and straightforward. These ERVs can be mounted in any orientation. Further, the RA/EA airstreams can be switched with the OA/SA airstream.



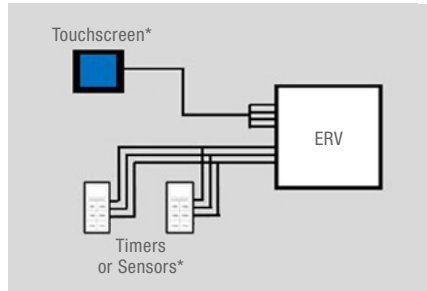
In the installation drawing shown above, the furnace blower must run whenever the ERV is operating. Set the furnace fan to "on" at a continuous low speed, or use the optional FM control to sync the fan with the ERV.

CONTROL STRATEGIES

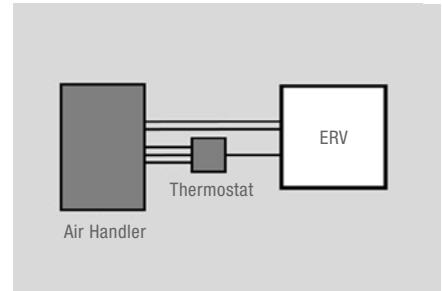
SINGLE CONTROL EV PREMIUM+



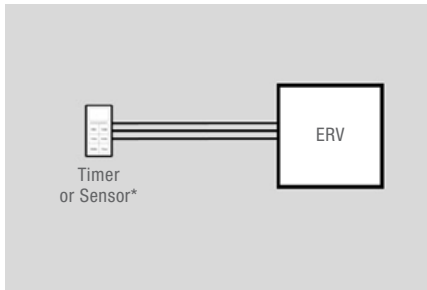
MULTIPLE CONTROLS EV PREMIUM+



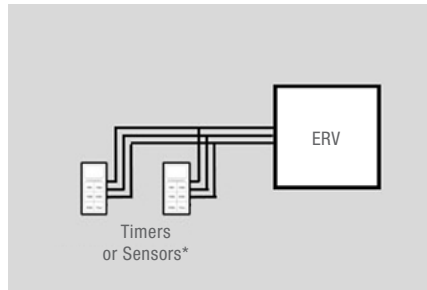
INTERLOCK WITH AIR HANDLER** EV PREMIUM+



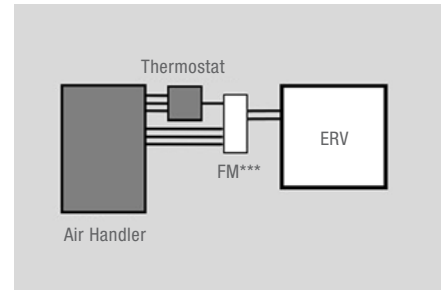
EV PREMIUM



EV PREMIUM



EV PREMIUM



* Indicates accessory

** Additional controls can still be used

*** Accessory limits unit to one speed (high) only

MAINTENANCE

Disposable filters should be checked and replaced as needed. Additionally, once a year, vacuum the four core faces using a soft brush. The RenewAire core does not need to be washed, as particulates do not accumulate in the core.



Member of the S&P Group
Family of Brands



2026 © RenewAire LLC
LIT118_06 (01/26)